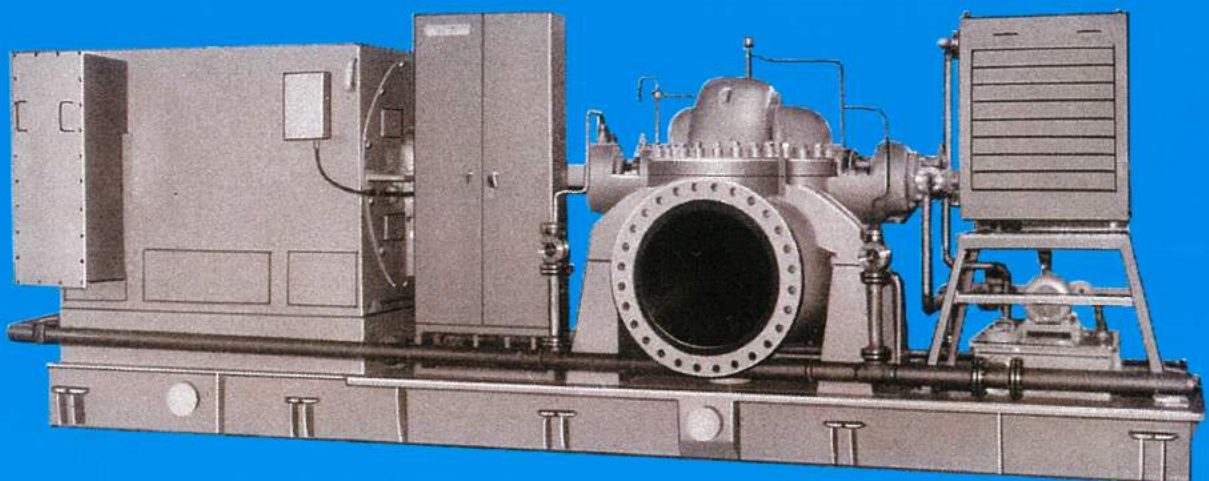


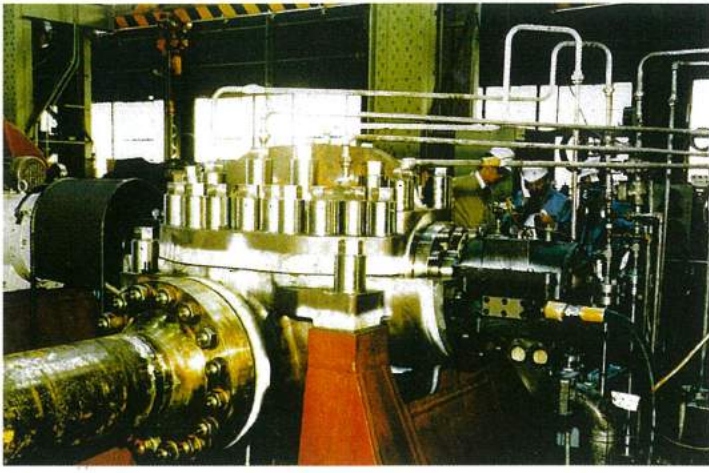


**EBARA**

# **PIPELINE PUMPS**

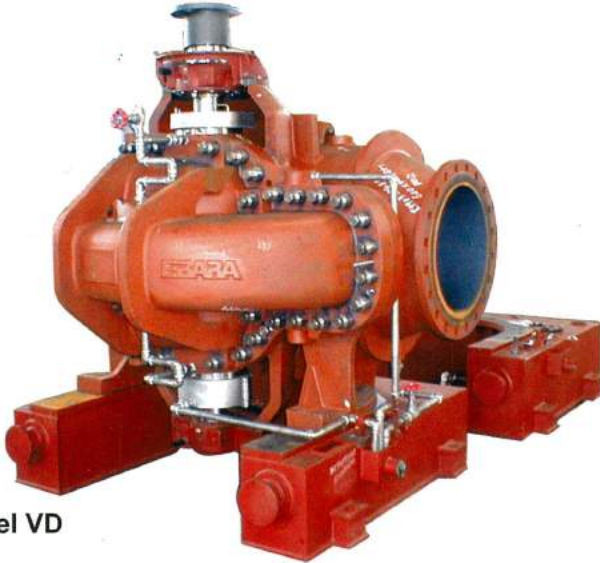
Model CN, VD, SPD, SPW





**Model SPD**

**Model CN**



**Model VD**



**Model SPW**

## FEATURES

- High Efficiency  
Guaranteed high performance, quality and prompt delivery.
- Easy Maintenance  
Axially split case design simplify inspection and disassembly.
- High Reliability  
Simple and durable construction enable smooth operation.
- Wide Selection  
Various material combinations and mechanical options to meet all customer requirement.

## APPLICATIONS

- Water & crude oil transfer, pipeline
- Booster / Water supply / Water intake / Drainage
- Petrochemical / Other Chemical Industries
- Boiler Feed / Refinery / Fire Fighting
- Mine Dewatering / Water circulation
- Sea water injection

## APPLICATION RANGE

Capacity up to 250m<sup>3</sup>/min (66000USGPM)  
 Total head up to 1350m (4400ft)  
 Liquid temperature -20~200°C (-4~560°F)

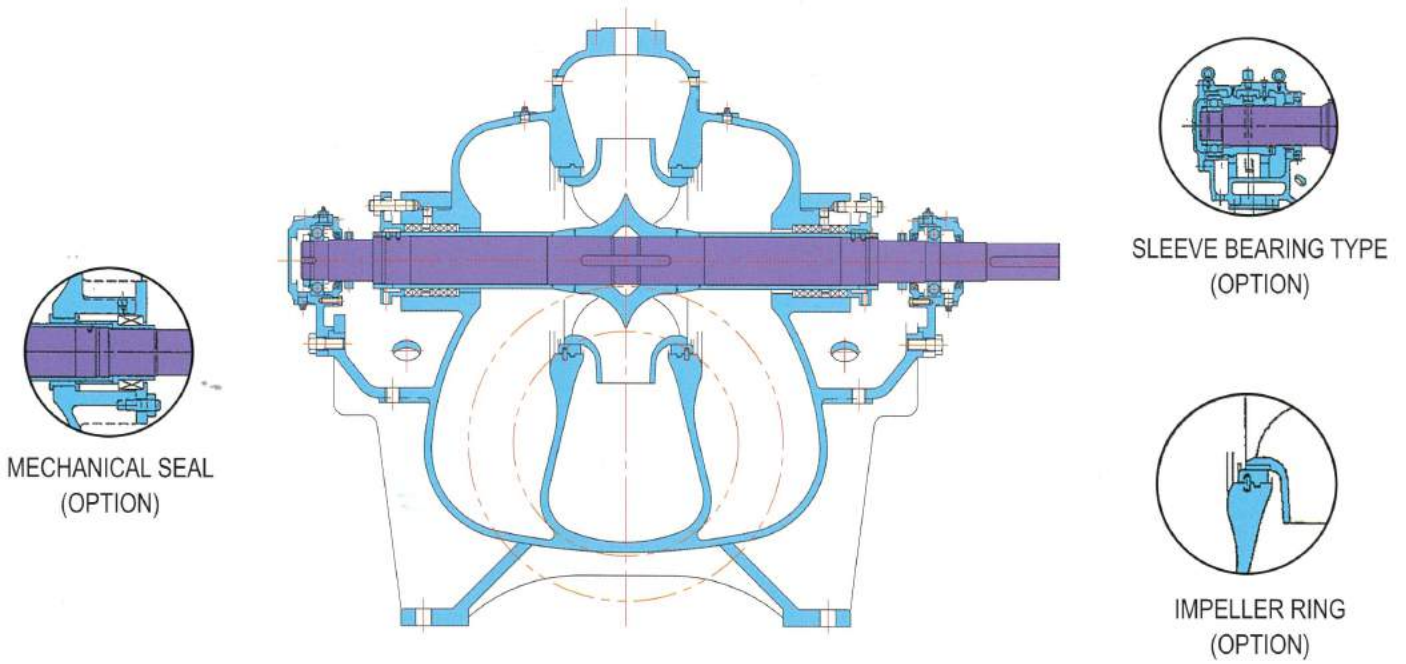
## SPECIFICATIONS

- Model CN / VD  
Horizontal / Vertical shaft, axially split, double suction, single stage (double) volute pump.
- Model SPD  
Horizontal shaft, axially split, double suction, multi stage volute pump.
- Model SPW  
Horizontal shaft, axially split, twin suction, multi stage volute pump.

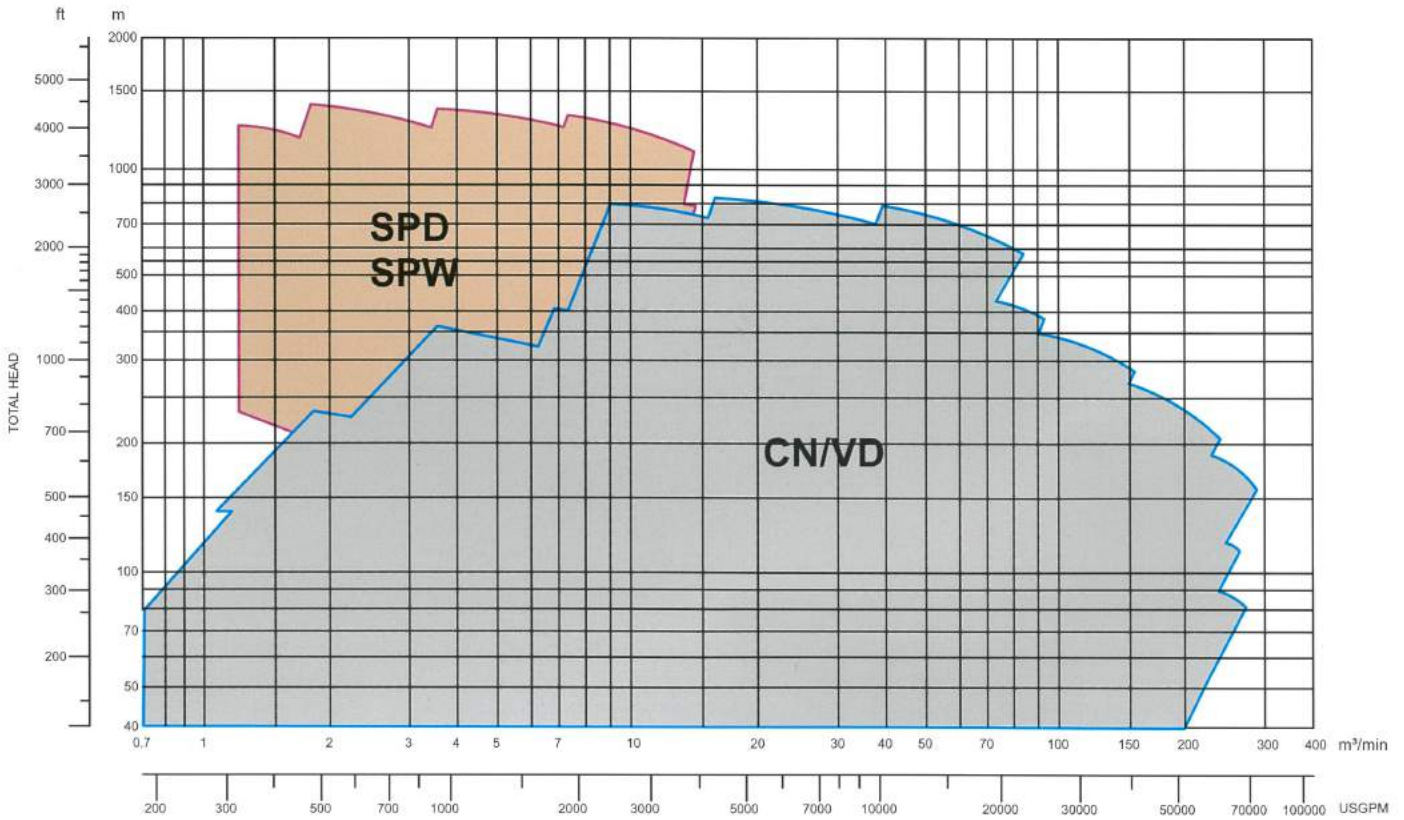


# SECTIONAL VIEW

Model CN



# SELECTION CHART



Note : For detail selection please contact our factory.



**EBARA** CORPORATION

**HEAD OFFICE:**

11-1, Haneda Asahi-cho, Ota-ku, Tokyo,  
144 Japan  
Phone: Tokyo 743-6111  
Cable: EBARAMAIN TOKYO  
Int'l Telex: J22988 EBARA TYO  
Fax: 745-3356

**OVERSEAS OFFICES**

**London Office**

6th Floor, Regal House London Road  
Twickenham Middlesex, TW 1 3QS  
England  
Phone: 01-892-8971-5  
Telex: 263857(EBR UK G)  
Fax: 01-891-6730

**New Delhi Office**

c/o Technocolab, 706/707,  
Divika Tower, 6, Nehru Place  
New Delhi-110 019, India  
TEL: 641-1220  
TELEX: 031-62851 EBRA IN

**Jakarta Office**

c/o P.T. Palmas Entraco  
Jl. Gunung  
Sahari Raya 57G, Jakarta  
Indonesia  
Phone: 21-410540  
Cable: Ebara Jakarta  
Telex: 49128(PALCO JKT)  
Fax: 21-412908

**Beijing Office**

Room6002, Yanjing Hotel,  
19, Fu Xing Men Wai. Street,  
Beijing City,  
People's Republic of China  
Phone: Yanjing Hotel 86-8721 Room # 6002  
Telex: 8520028 Yjhtl CN  
Attn:Room 6002, Mr.K.Matsumoto of

Ebara Corp., Beijing.

**OVERSEAS COMPANIES**

**Ebara International Corporation**

Los Angeles Office  
19750 South Vermont Ave., Suite 160  
Torrance, Calif. 90502 U.S.A.  
Phone: 213-324-5277  
Telex: 664498 EBARA LA. INW  
Fax: 213-324-3580

**Greensburg Office**

Hempfield Industrial Park  
R.D.# 6 Box 516  
Greensburg Pa 15601 U.S.A.  
Phone: 412-832-1200  
Telex: 212-709(EBARA UR)  
Fax: 412-838-0279

**Houston Office**

4544 South Pinemont  
Suite 202 Houston, Texas 77041  
U.S.A.  
Phone: 713-690-1595  
Telex: 792113(EBARA INTL HOU)  
Fax: 713-690-1599

**Cryodynamics Company-Ebara Group**

51 Main Ave., Sacramento, Calif 95838 U.S.A.  
Phone: 916-920-5451  
Telex: 171366  
Fax: 913-925-6654

**Ebara do Brasil Maquinas Industriais Ltda.**

Avenida Paulista 949, 21º Andar,  
Conj. 211 Cep01311 sao Paulo,  
S.P. Brasil  
Phone: 011-287-7744  
Cable: EBRASMAIN SAO PAULO  
Telex: 011-24585(1124585 EBSP BR)  
Fax: 011-288-1277

**Ebara Industrias Mecanicas e Comercio Ltda.**

Rua Joaquim Marques de Figueiredo  
2-31, Bauru, S.P.Brasil  
Phone: 142-23-7444

**Ebara Engineering Singapore Pte Ltd.**

583 Orchard Road # 07-01  
Forum Galleria  
Singapore 0923  
Phone: 7349588  
Telex: 37018(EBRSIN RS37018)  
Fax: 7344551

**P.T. Ebara Indonesia**

Cimanggis KM.32 Desa Curug,  
Bogor Jawa Barat, Jakarta Indonesia  
Phone: 21-870033, 21-870051