



# HORIZONTAL MIXED FLOW VOLUTE PUMPS

Model SZ Bore 200~500mm (8~20in)

SZ Split Casing Bore 600~900mm (24~36in)

## APPLICATIONS

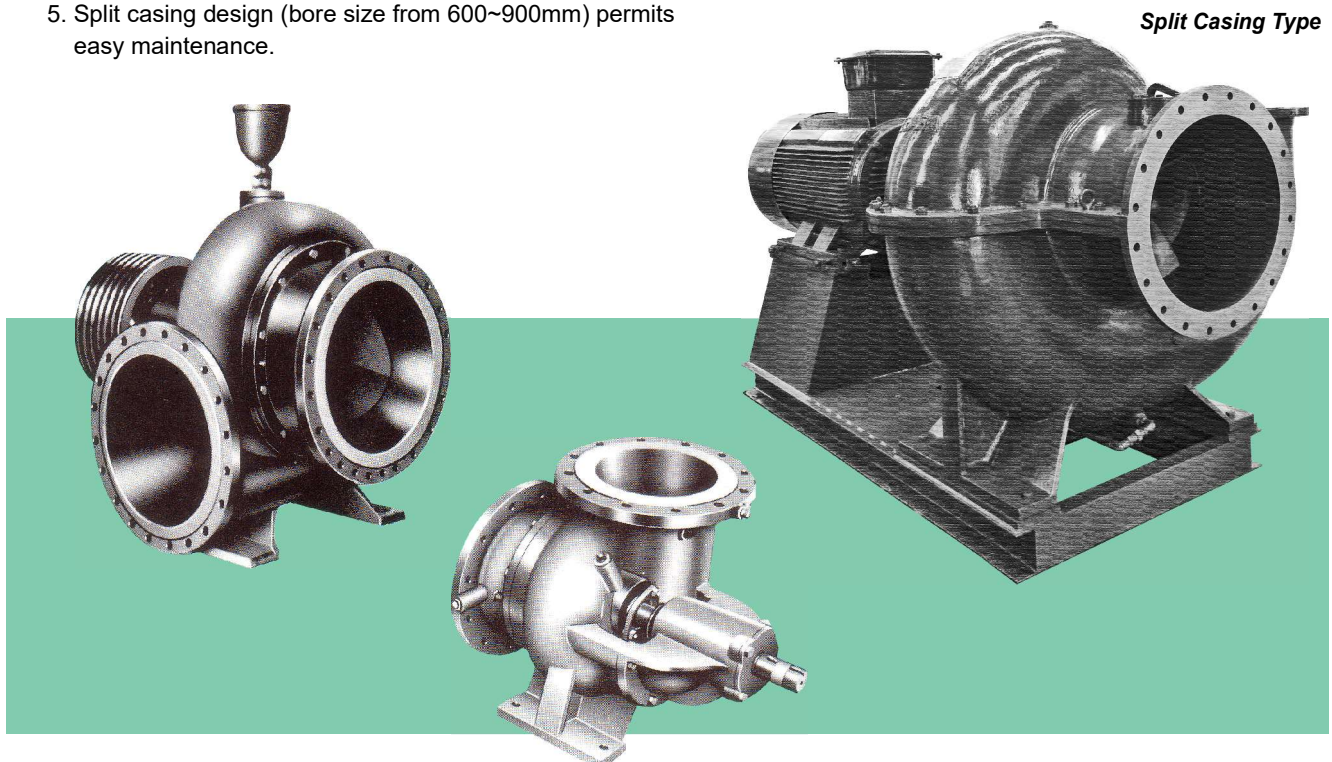
Irrigation  
Drainage  
Flood control  
Industries

## FEATURES

1. Easy replacement of gland packing without disassembling of pump casing.
2. Sealing water from outside is not required.
3. Power consumption is constant over all capacity range and driver will not be overload at larger capacity points.
4. Special stand bearing is not required for Belt driven over large capacity-head range.
5. Split casing design (bore size from 600~900mm) permits easy maintenance.

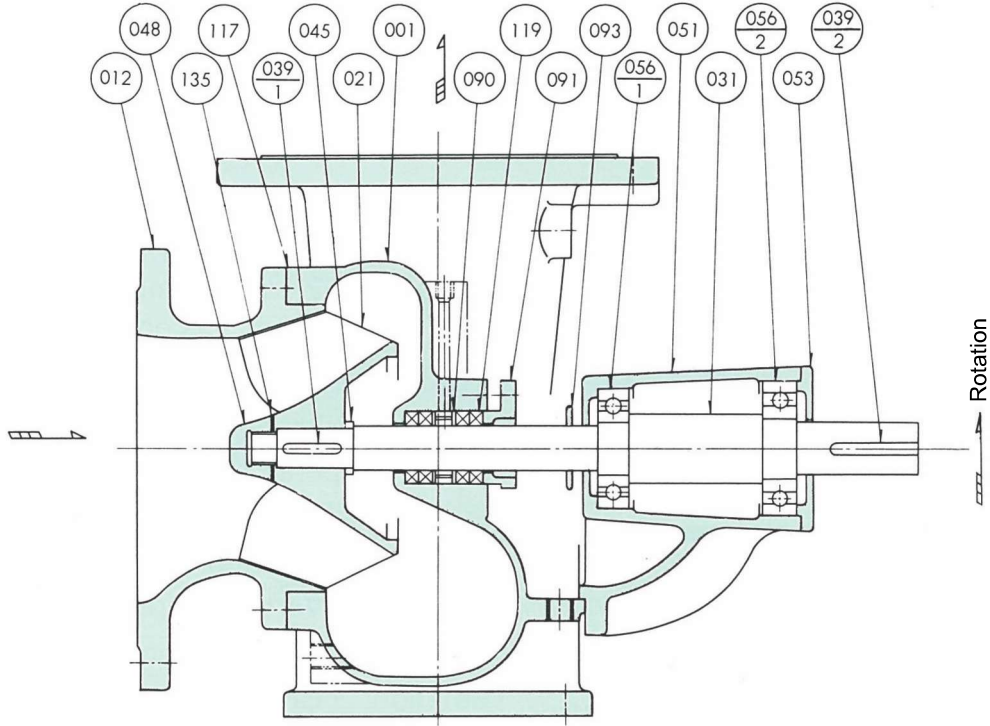
## STANDARD DESIGNS

Capacity	: 2~180m <sup>3</sup> /min
Total head	: 2~16m
Liquid	: Clear water of equivalent
Liquid temperature:	Below 80°C
Suction pressure (gage):	to +1kgf/cm <sup>2</sup> {0.0981MPa}
Casing	: Vertically split at suction cover
Impeller	: Single suction, open type
Rotation	: Counter-Clockwise when viewed from driven end.



# CONSTRUCTION

## Pump Bore 200 & 250mm (8 & 10in)

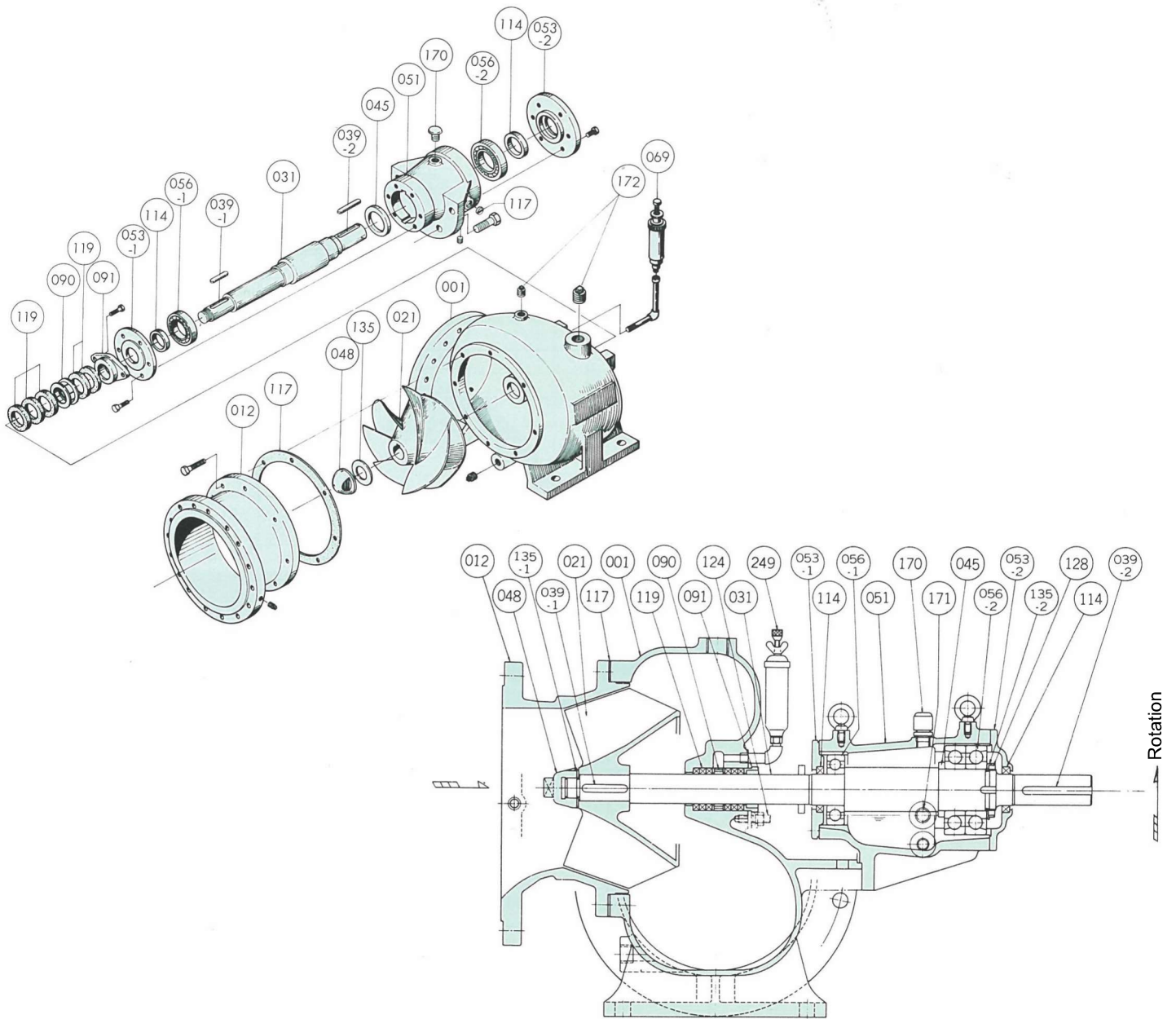


NO.	PART NAME	MATERIALS (JIS CODE)	NO. FOR 1 SET	NO.	PART NAME	MATERIALS (JIS CODE)	NO. FOR 1 SET
001	Casing	Cast iron (FC200)	1	051	Bearing housing	Cast iron (FC200)	1
012	Suction cover	Cast iron (FC200)	1	053	Bearing cover	Cast iron (FC200)	1
021	Impeller	Cast iron (FC200)	1	056-1	Ball bearing	/	1
031	Shaft	Carbon steel (S35C)	1	056-2	Ball bearing	/	1
039-1	Impeller key	Carbon steel (S50C)	1	090	Lantern ring	Bronze (BC6)	1
039-2	Key	Carbon steel (S50C)	1	091	Gland	Bronze (C3771BD)	1
045	Distance piece	Mild steel (SS400)	1	093	Deflector	Synthetic Rubber	1
048	Impeller nut	Bronze (C3604BD)	1	117	Gasket	/	1
				119	Packing	/	4
				135	Washer	Brass (C2801P)	1

- Flange Position: End-suction, Top-Discharge
- Flange rating: JIS 10K (Thick-type)
- Bearing: Sealed ball bearing
- Stuffing box: Conventional packing

# CONSTRUCTION

## Pump Bore 300~500mm (12~20in)



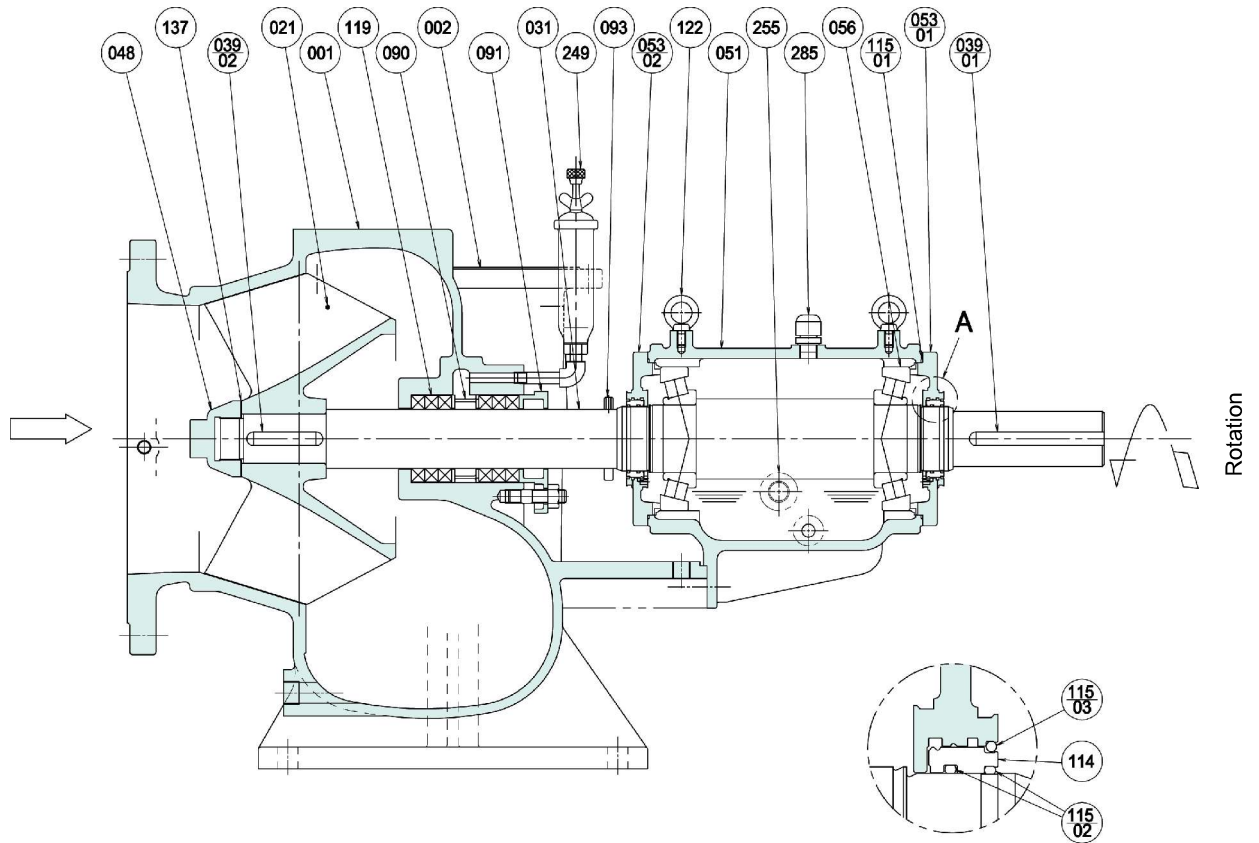
NO.	PART NAME	MATERIALS (JIS CODE)	NO. FOR 1 SET	NO.	PART NAME	MATERIALS (JIS CODE)	NO. FOR 1 SET
001	Casing	Cast iron (FC250)	1	056-1	Ball bearing	/	1
012	Suction cover	Cast iron (FC250)	1	056-2	Ball bearing	/	1
021	Impeller	Cast iron (FC200)	1	249	Grease cup	/	1
031	Shaft	Carbon steel (S35C)	1	090	Lantern ring	Bronze (BC6)	1
039-1	Impeller key	Carbon steel (S45C)	1	091	Gland	Bronze (BC6)	1
039-2	Key	Carbon steel (S45C)	1	114	Oil seal	/	2
045	Distance piece	Mild steel (SS400)	1	117	Gasket	/	1
048	Impeller nut	Cast iron (FC200)	1	119	Gland packing	/	6
051	Bearing housing	Cast iron (FC200)	1	135	Washer	Brass (C2801P)	1
053-1	Bearing cover	Cast iron (FC200)	1	170	Oil plug	Polycarbonate	1
053-2	Bearing cover	Cast iron (FC200)	1	171	Oil sight	/	1
				172	Plug	/	

- Flange Position: End-suction, Side-Discharge
- Flange rating: JIS 10K (Thick-type)
- Bearing: Oil bath type ball bearing
- Stuffing box: Packing with grease

# CONSTRUCTION

## Pump Bore 600~900mm (24~36in)

(Split casing type)



NO.	PART NAME	MATERIALS (JIS CODE)	NO. FOR 1 SET	NO.	PART NAME	MATERIALS (JIS CODE)	NO. FOR 1 SET
001	Upper casing	Cast iron (FC250)	1	091	Gland	Stainless Steel casting (SCS13)	1
002	Lower casing	Cast iron (FC250)	1	093	Deflector	Carbon Steel (SS400)	1
021	Impeller	Cast iron (FC200)	1	114	Oil seal	Bronze (CAC402)	2
031	Shaft	Carbon steel (S45C)	1	115-1	O-ring	Synthetic Rubber	2
039-1	Key	Carbon steel (S50C)	1	115-2	O-ring	Synthetic Rubber	4
039-2	Impeller key	Carbon steel (S50C)	1	115-3	O-ring	Synthetic Rubber	2
048	Impeller nut	Carbon steel (S45C)	1	119	Gland packing	Carbon Fiber	6
051	Bearing housing	Cast iron (FC250)	1	122	Eye bolt	Carbon Steel (SS400)	2
053-1	Bearing cover	Cast iron (FC200)	1	137	Impeller washer	Stainless Steel (SUS304)	1
053-2	Bearing cover	Cast iron (FC200)	1	249	Grease pump	/	1
056	Bearing	/	2	255	Oil level	/	1
090	Lantern ring	Stainless Steel (SUS304)	1	285	Air vent	/	1

- Flange Position: End-suction, Top-Discharge
- Flange rating: JIS 2K / JIS 10K (Thick-type)
- Bearing: Oil bath type ball bearing
- Stuffing box: Packing with grease

# SELECTION CHART

Designation: (8") 200 SZ 1750 min<sup>-1</sup> 15kW

Input through Belt

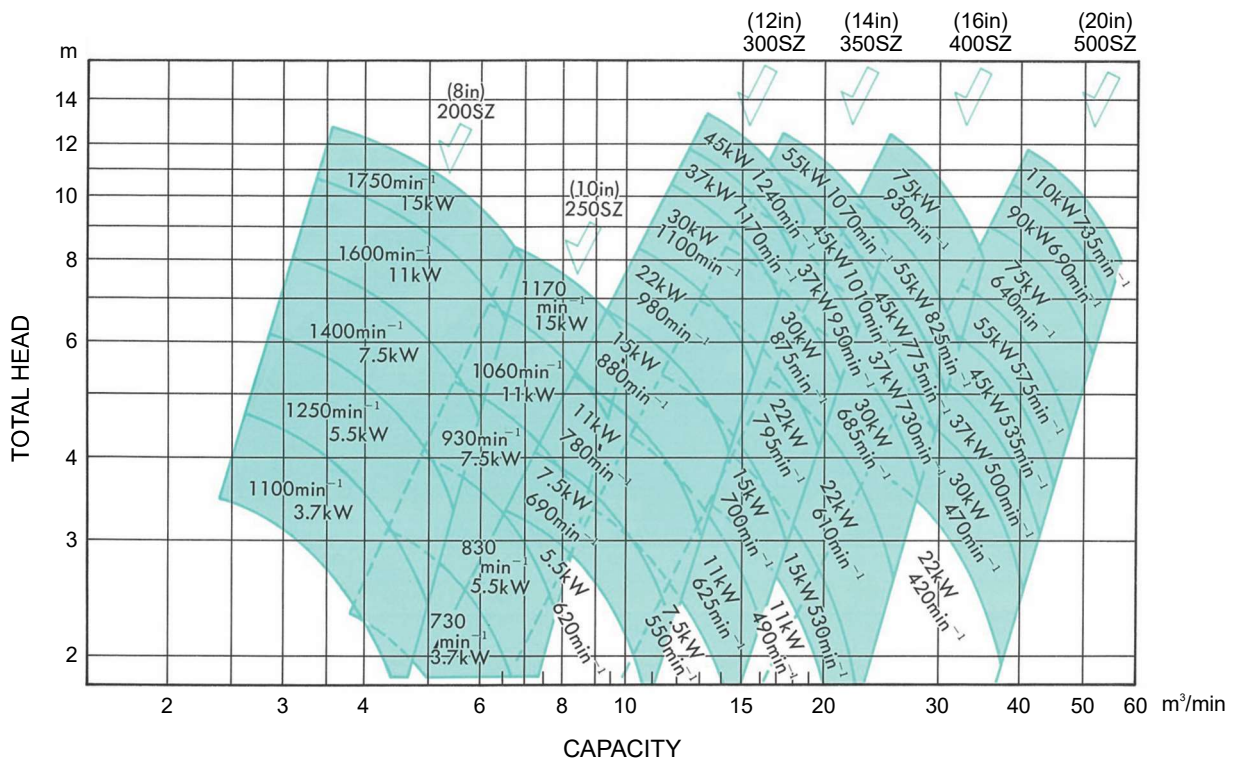
Pump Speed

Model

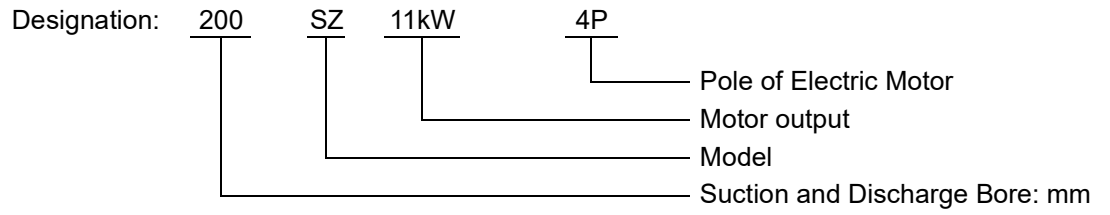
Suction and Discharge

Bore: (in) mm

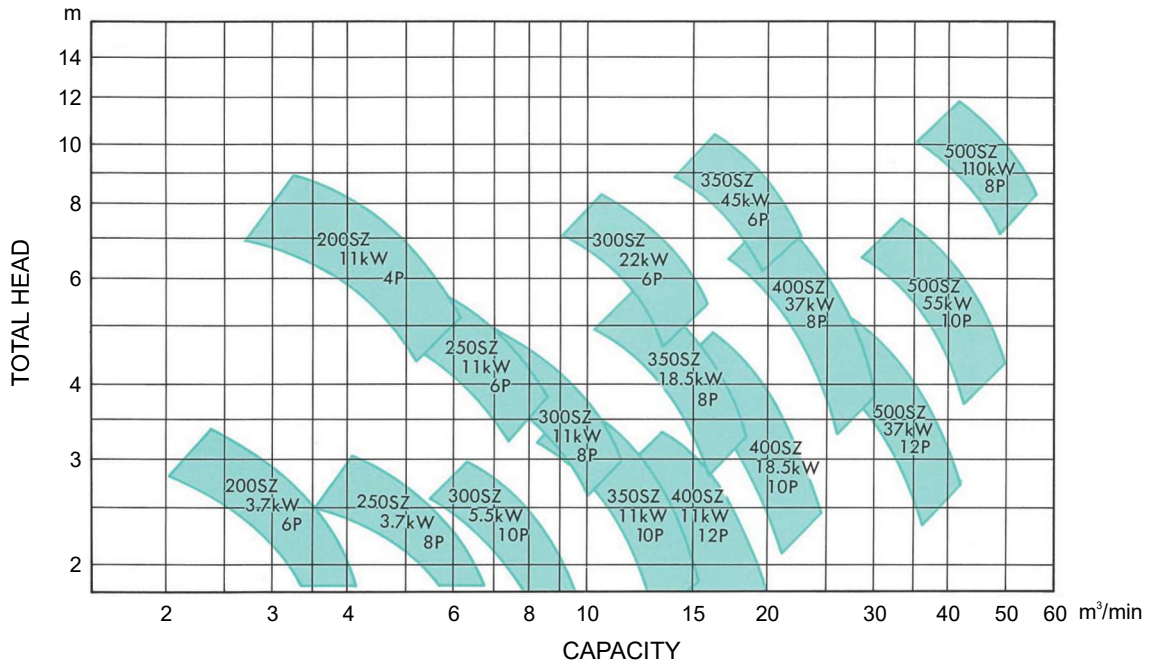
## V-Belt Driven



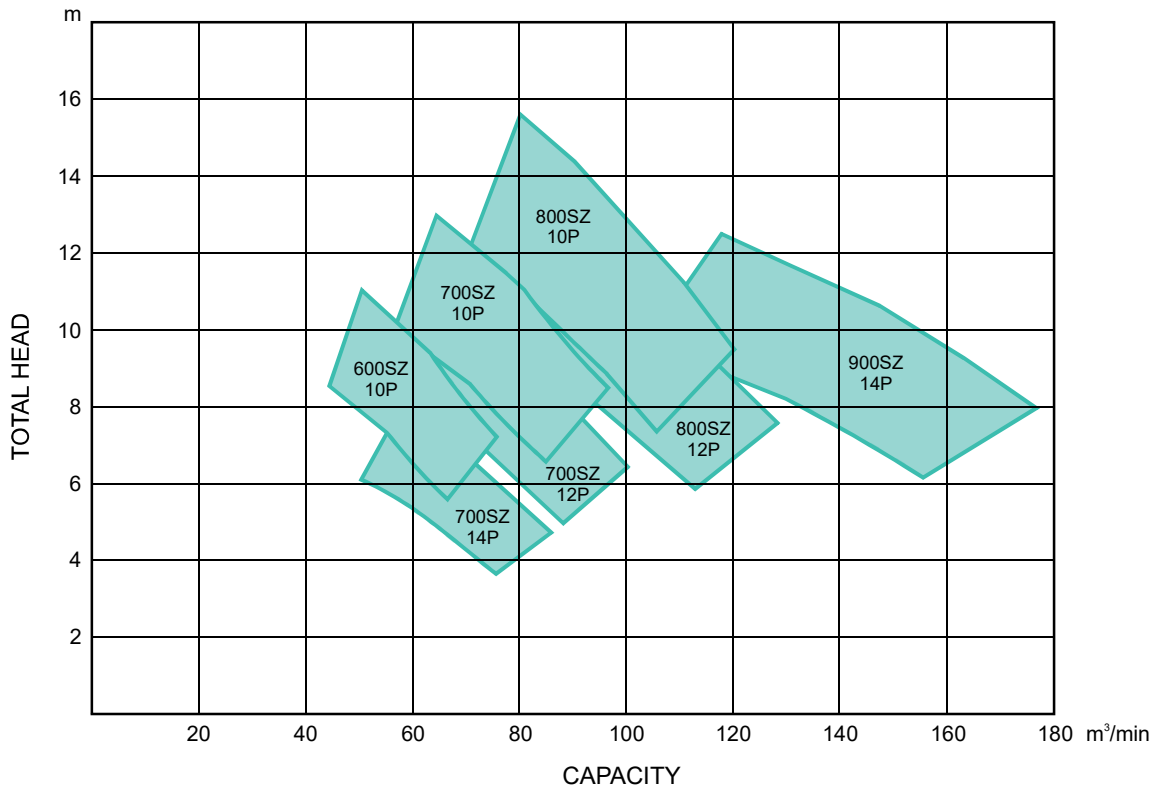
# SELECTION CHART



## Pump Bore 200~500mm (8~20in)



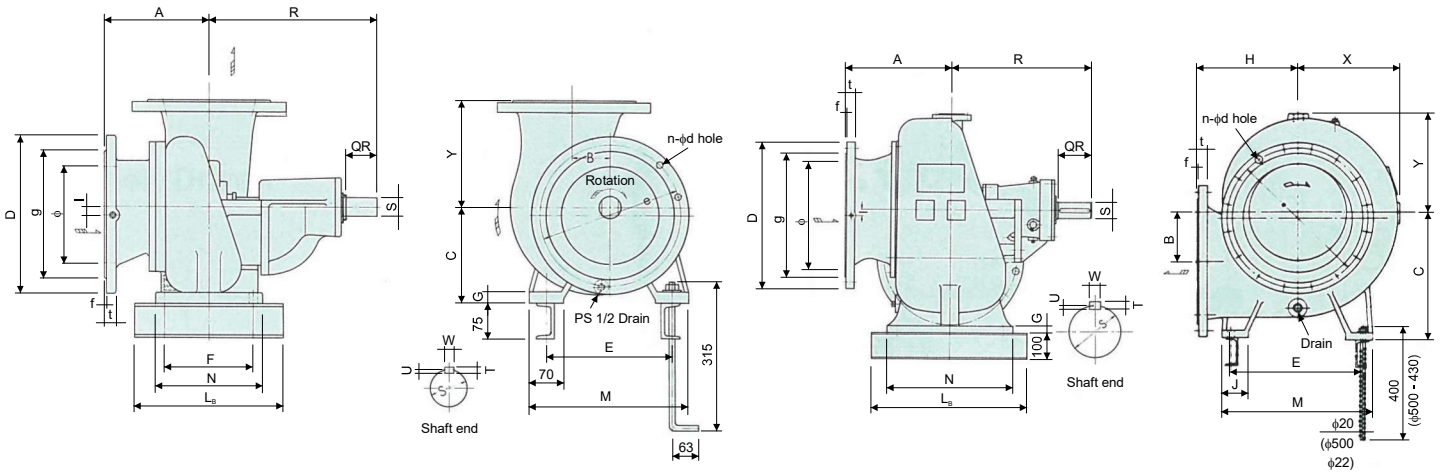
## Pump Bore 600~900mm (24~36in)



# OUTLINE DIMENSION

## Pump Bore 200 & 250mm (8 & 10in)

## Pump Bore 300~500mm (12~20in)



Unit: mm

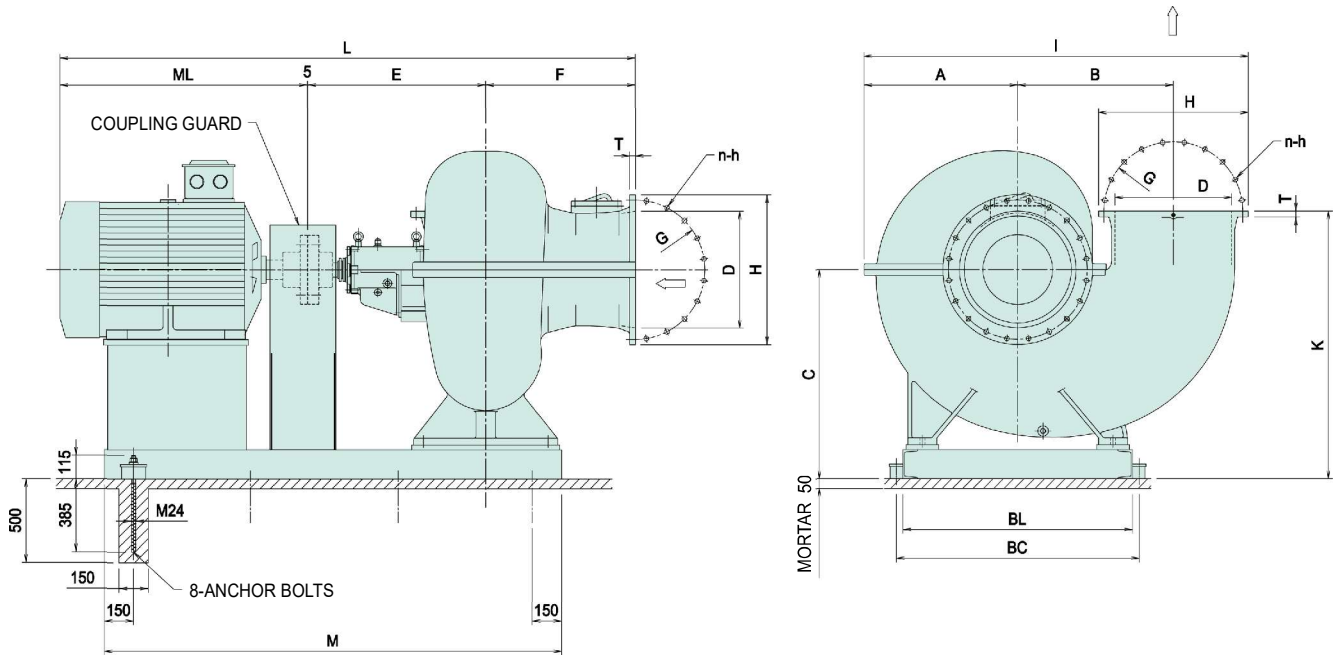
Model	Main Dimensions														Flange						Shaft end					Approx. Weight {Mass} (kg)		
	A	R	B	H	C	I	E	F	G	J	L <sub>B</sub>	M	N	X	Y	φ	D	g	e	n-d	t	f	S	QR	T		U	W
200SZ	224	355	80		200	15	280	190	20	70	320	340	230		200	200 (8")	330	265	290	12-23	26	2	40	89	8	4.5	10	83
250SZ	289	380	100		240	15	330	235	22	80	380	400	280		260	250 (1")	400	325	355	12-25	30	2	40	90	8	4.5	10	125
300SZ	340	590	135	280	360	25	330	290	24	75	450	400	350	259	237	300 (12")	445	370	400	16-25	32	3	48	122	8	4.5	12	230
350SZ	390	680	155	330	420	20	410	350	26	90	550	490	420	305	279	340 (14")	490	415	445	16-25	34	3	55	145	8	4.5	12	320
400SZ	430	770	185	370	470	25	490	410	28	100	600	570	480	356	323	400 (16")	560	475	510	16-27	36	3	65	170	10	5	15	400
500SZ	530	850	230	460	580	31	620	500	32	125	750	720	600	442	398	500 (20")	675	585	620	20-27	40	3	75	176	12	6	18	550

(NOTE) Data specified in this catalogue may be changed without notice.

# OUTLINE DIMENSION

## Pump Bore 600~900mm (24~36in)

(Split casing type)



Model	Main Dimensions											Flange JIS 2K					Approx. Weight {Mass} (kg)	
	A	B	C	K	I	E	F	ML	L	M	BL	BC	D	H	G	T		n-h
600SZ	790	800	1075	1375	1975	912	700	Later	Later	Later	1120	1180	600	770	715	30	20-φ25	1800
700SZ	800	950	1080	1380	2185	1150	730	Later	Later	Later	1250	1350	700	875	820	30	24-φ25	2200
800SZ	800	1100	1120	1620	2410	1460	820	Later	Later	Later	1400	1470	800	995	930	36	24-φ27	3200
900SZ	850	1100	1250	1750	2510	1490	930	Later	Later	Later	1280	1350	900	1095	1030	36	24-φ27	4000

(NOTE) Data specified in this catalogue may be changed without notice.



## EBARA VIETNAM PUMP COMPANY LTD. (EVPC)

### HEAD OFFICE & FACTORY:

Lot XN01, Lai Cach Industrial Park, Cam Giang District, Hai Duong Province, Vietnam

Tel: (84) 0220-3850 182 Fax: (84) 0220-3850 180

Website: [www.ebarapump.com.vn](http://www.ebarapump.com.vn)

### HANOI BRANCH:

Unit 022, 2nd Floor, No.14 Thuy Khue Street, Tay Ho District, Hanoi

Tel: (84) 024-328 99911 Fax: (84) 024-328 99955

### HO CHI MINH REPRESENTATIVE OFFICE:

Unit 2, 4th Floor, Central Park Tower, No.117 Nguyen Du Street, District 1, Ho Chi Minh City

Tel: (84) 028-6298 7555 Fax: (84) 028-6291 3056