

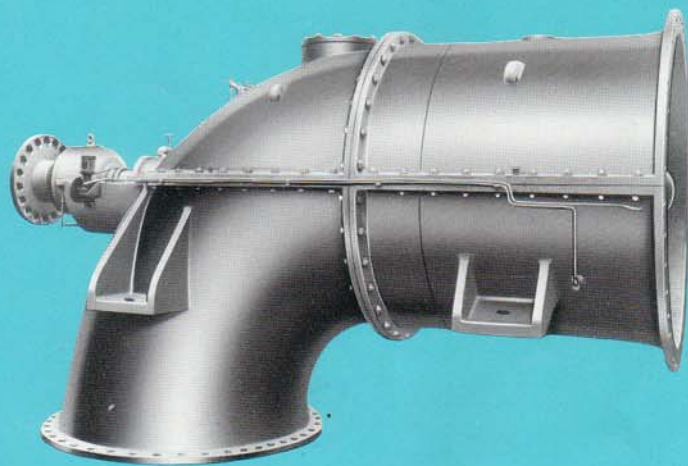


EBARA

CP 2101ED

HORIZONTAL AXIAL-FLOW PUMPS

Model HS Bore 500 ~ 1500 mm (20 ~ 60 in)



EBARA HORIZONTAL AXIAL-FLOW PUMPS

FEATURES

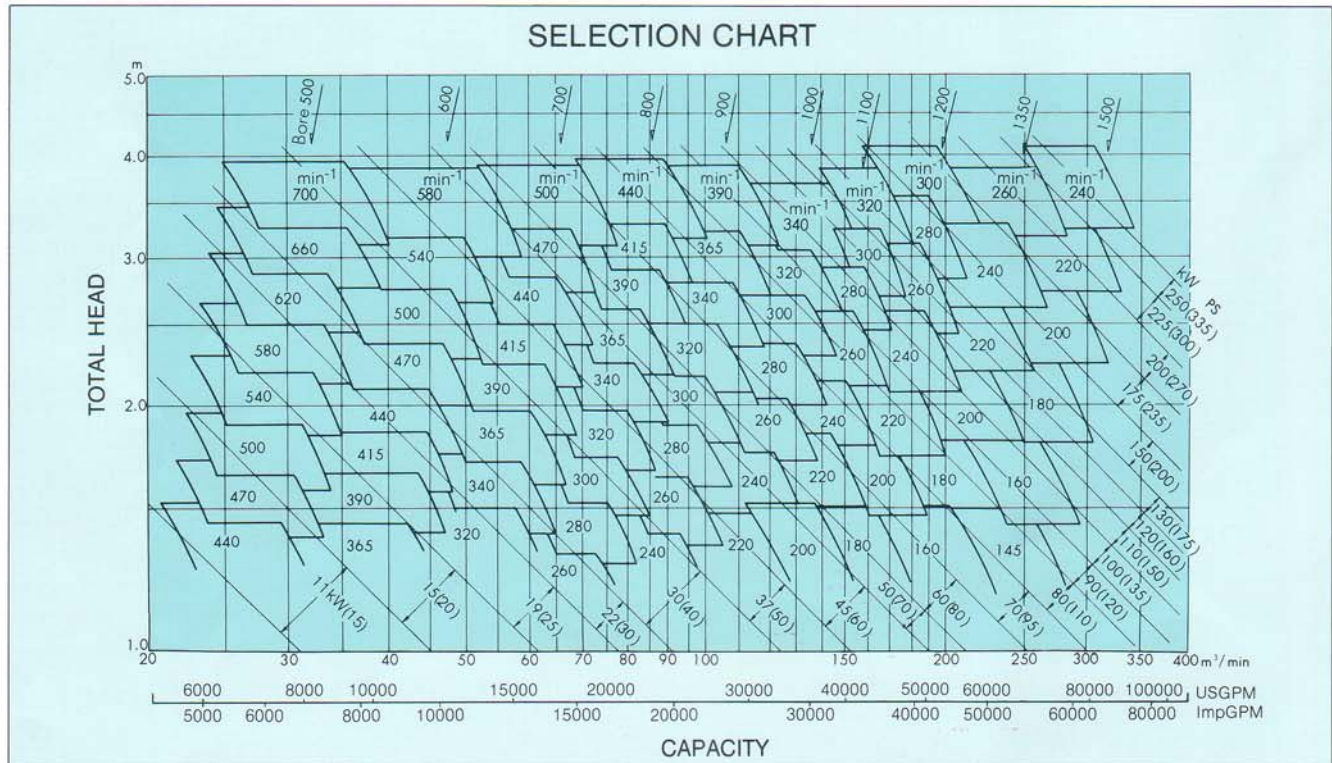
- Higher operating efficiency over a wide range of capacities reduce operation cost.
- Simple construction permits easy maintenance.
- Guaranteed high performance, quality and prompt delivery.

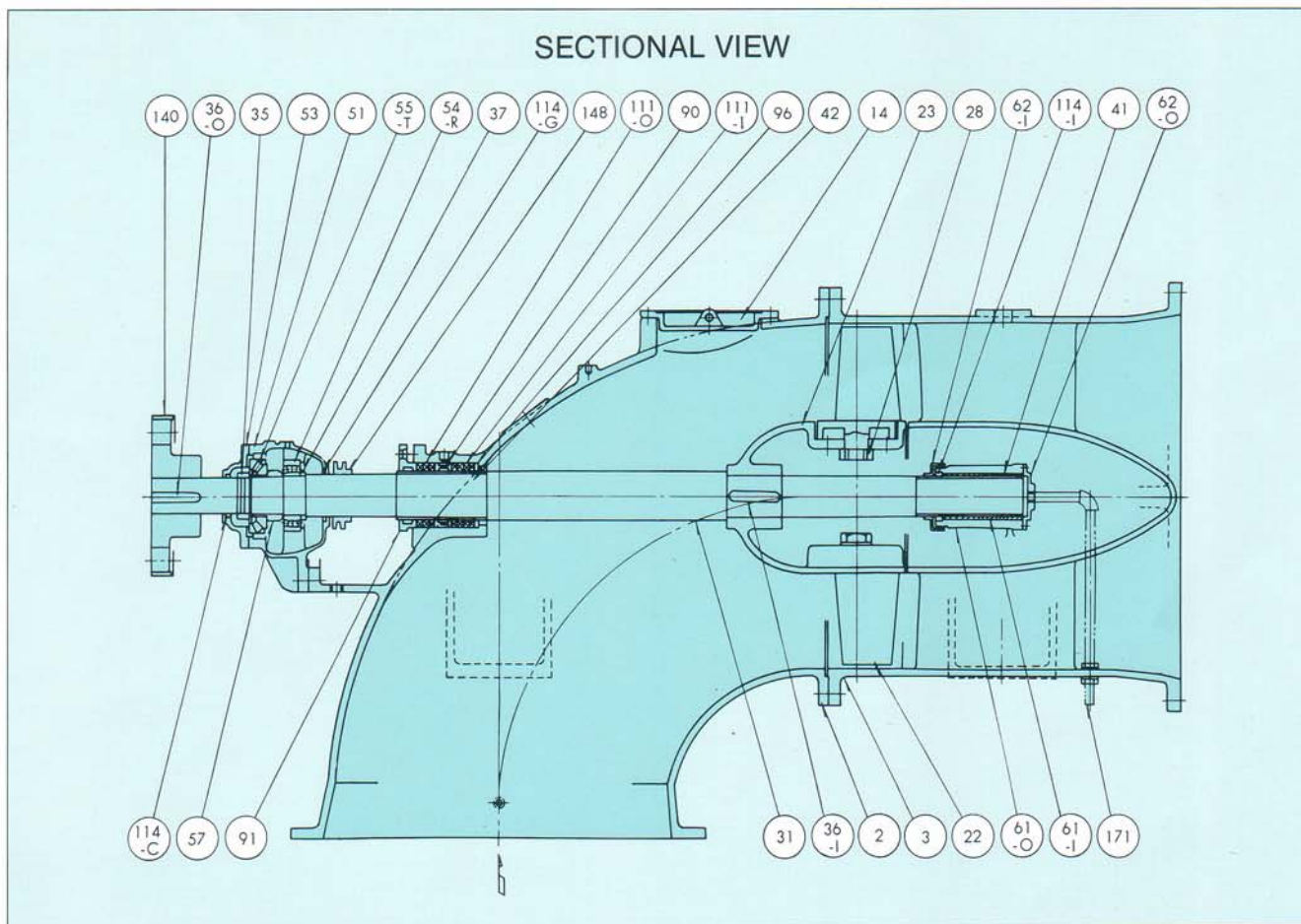
APPLICATIONS

River water drainage,
Irrigation and drainage for agricultural use,
Water intake/transfer for general industrial use.

SPECIFICATIONS

Bore	500 ~ 1500mm (20 ~ 60 in)
Capacity	Approx. 21 ~ 340m ³ /min (5500 ~ 90000 USGPM)
Total head	Approx. 1.2 ~ 4m (4 ~ 13ft)
Liquid	Fresh water, river water, sea water, etc. temperature 0 ~ 45°C (32 ~ 110°F)
Construction Radial bearing Thrust bearing Shaft seal	Ball bearing & submerged bearing Roller bearing Gland packing
Accessories	Grease lubricating unit, pump base, shaft coupling, vacuum breaker, anchor bolts



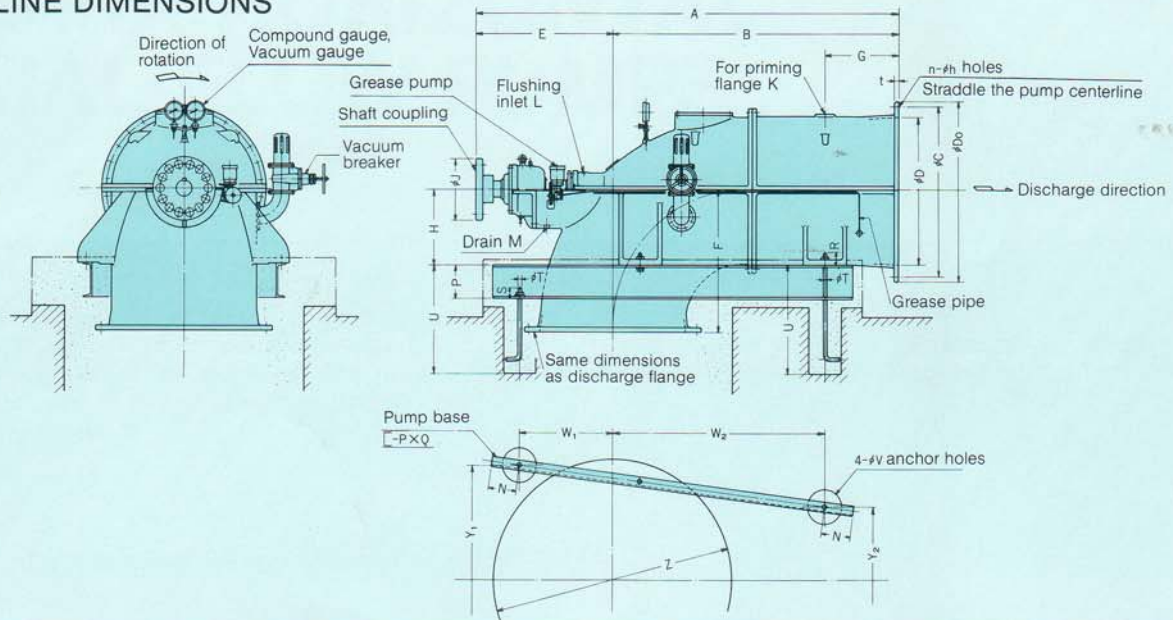


STANDARD MATERIALS

PART No.	PART NAME	MATERIAL	Q'TY	PART No.	PART NAME	MATERIAL	Q'TY
2	Suction casing	Cast Iron	1	57	Journal	Carbon Steel	1
3	Guide casing	Cast Iron	1	61-I	Submerged bearing metal	Special alloy	1
14	Inspection hole cover	Cast Iron	1	61-O	Submerged bearing housing	Cast Iron	1
22	Impeller	Bronze	4	62-I	Seal cover	Cast Iron	1
23	Impeller hub	Cast Iron	1	62-O	Submerged bearing cover	Cast Iron	1
28	Impeller nut	Carbon Steel	4	90	Lantern ring	Bronze	1
31	Pump shaft	Carbon Steel	1	91	Gland	Bronze	1
35-I	Shaft nut	Carbon Steel	1	96	Packing plate	Rolled Steel	1
36-I	Impeller key	Carbon Steel	1	111-I	Packing	Carbonized fiber	1 set
36-O	Coupling key	Carbon Steel	1	111-O	Packing	Carbonized fiber	1 set
37	Distance piece	Rolled Steel	1	114-C	Oil seal	—	1
41	Bearing sleeve	Stainless Steel	1	114-G	Oil seal	—	1
42	Packing sleeve	Stainless Steel	1	114-I	Oil seal	—	1
51	Bearing housing	Cast Iron	1	140	Coupling	Cast Iron	1
53	Bearing cover	Cast Iron	1	148	V belt pulley(for grease pump)	Carbon Steel	1
54-R	Radial ball bearing	—	1	171	Grease pipe	Brass	1
55-T	Thrust roller bearing	—	1				

Note: Other materials are also available.

OUTLINE DIMENSIONS



(UNIT: mm)

Bore	Pump						Flange				Coupling	Small piping		
D	A	B	E	F	G	H	Do	C	t	n-h	J	K	L	M
500	1690	975	715	475	250	250	706	639	31	12-27	250	2 in	3/4 in	3/4 in
600	1910	1170	740	570	300	300	810	743	32	16-27	280	2 in	3/4 in	3/4 in
700	2200	1365	835	665	350	350	928	854	33	16-33	315	2 in	3/4 in	3/4 in
800	2420	1560	860	760	400	400	1034	960	36	20-33	355	2 in	3/4 in	3/4 in
900	2700	1755	945	855	450	450	1156	1073	38	20-33	400	2 in	3/4 in	3/4 in
1000	2950	1950	1000	950	500	500	1262	1179	39	24-33	450	2 in	1 in	1 in
1100	3250	2145	1105	1045	550	550	1366	1283	41	24-33	450	2 1/2 in	1 in	1 in
1200	3500	2340	1160	1140	600	600	1470	1387	43	28-33	560	2 1/2 in	1 in	1 in
1350	3900	2635	1265	1285	675	675	1642	1552	46	28-39	560	3 in	1 in	1 in
1500	4250	2925	1325	1425	750	750	1800	1710	48	32-39	630	3 in	1 in	1 in

Bore	Base & Anchor bolt						Foundation						
D	N	P x Q	R	S	T	U	V	W ₁	W ₂	Y ₁	Y ₂	Z	
500	170	200 x 80	65	55	22	500	200	420	725	1050	500	950	
600	170	200 x 80	65	55	22	500	200	480	870	1140	600	1100	
700	190	250 x 90	70	60	24	630	225	560	1015	1240	700	1250	
800	190	250 x 90	70	60	24	630	225	570	1160	1360	800	1350	
900	220	250 x 90	85	70	30	800	275	640	1305	1500	900	1500	
1000	220	250 x 90	85	70	30	800	275	740	1450	1600	1000	1700	
1100	260	300 x 90	90	70	30	800	275	760	1595	1750	1100	1850	
1200	260	300 x 90	90	70	30	800	275	820	1740	1850	1200	2000	
1350	260	380 x 100	105	85	36	1000	300	850	1960	2090	1350	2200	
1500	260	380 x 100	105	85	36	1000	300	930	2175	2230	1500	2400	

All specifications are subject to change without notice.



EBARA CORPORATION

Head Office	11-1, Haneda Asahi-cho, Ota-ku, Tokyo, 144 Japan	Phone: Tokyo 743-6111
International Division	Asahi Bldg., 6-7, Ginza 6-chome, Chuo-ku, Tokyo, 104 Japan	Phone: Tokyo 572-5611
OVERSEAS OFFICES		
Jakarta Office	c/o PT. Palmas Entraco Jl. Gunung Sahari Raya 57G, Jakarta Indonesia	Phone: 412908
Manila Office	c/o Clindisco Bldg. 2288 Pasong Tamo Extension, Makati, Rizal, Philippines	Phone: 2-817-6662
Kuwait Office	c/o Fawaz Ref. and Air Conditioning Co., P.O. Box 20423, Safat Kuwait	Phone: 2446131
London Office	* 3rd Floor, Regal House, London Road, Twickenham, Middlesex, TW1 3QS, England	Phone: 1-892-8971